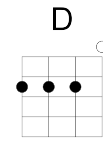
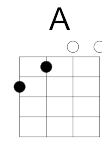


Big Yellow Taxi

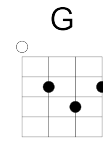
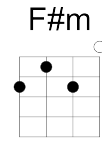
Joni Mitchell



Intro

G A D

They paved paradise and put up a parking lot
 With a pink hotel, a boutique and a swinging hot spot



Don't it always seem to go
 That you don't know what you've got til it's gone
 They paved paradise and put up a parking lot
 They took all the trees and put 'em in a tree museum
 And they charged all the people a dollar and a half
 just to see 'em

Don't it always seem to go
 That you don't know what you've got til it's gone
 They paved paradise and put up a parking lot

Hey farmer, farmer, put away that DDT now
 Give me spots on my apples but leave me the birds
 and the bees (please!)

Don't it always seem to go
 That you don't know what you've got til it's gone
 They paved paradise and put up a parking lot

Late last night I heard the screen door slam
 And a big yellow taxi took away my old man

Don't it always seem to go
 That you don't know what you've got til it's gone
 They paved paradise and put up a parking lot

Don't it always seem to go
 That you don't know what you've got til it's gone
 They paved paradise and put up a parking lot
 They paved paradise and put up a parking lot
 They paved paradise and put up a parking lot